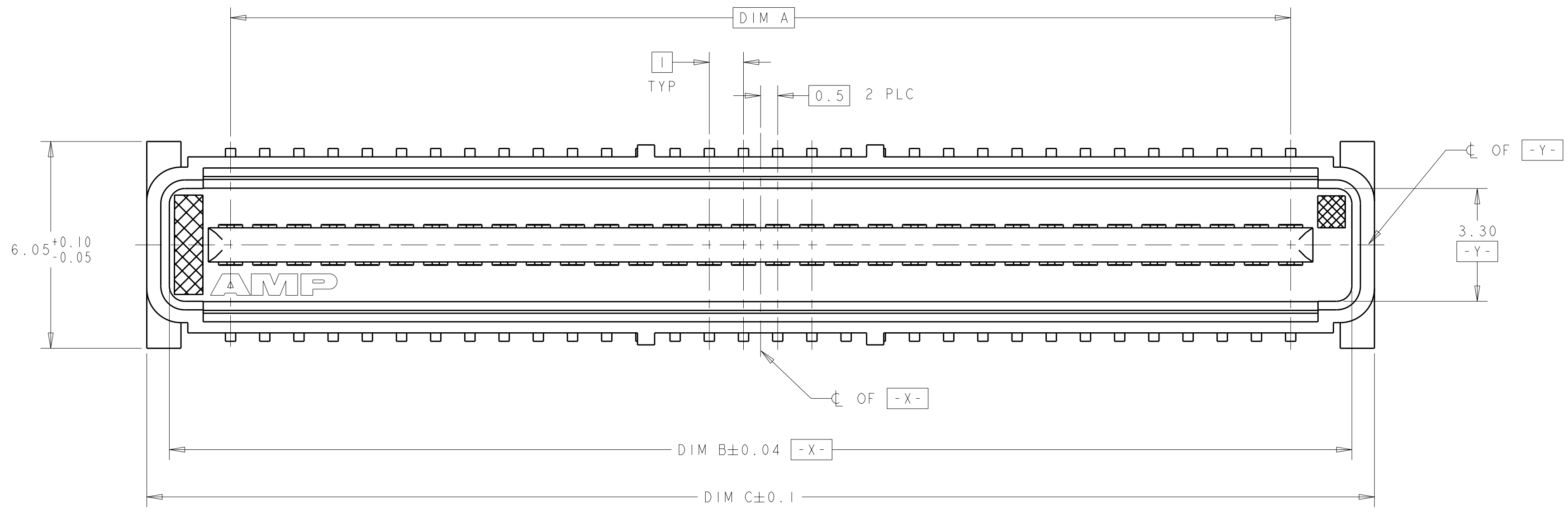
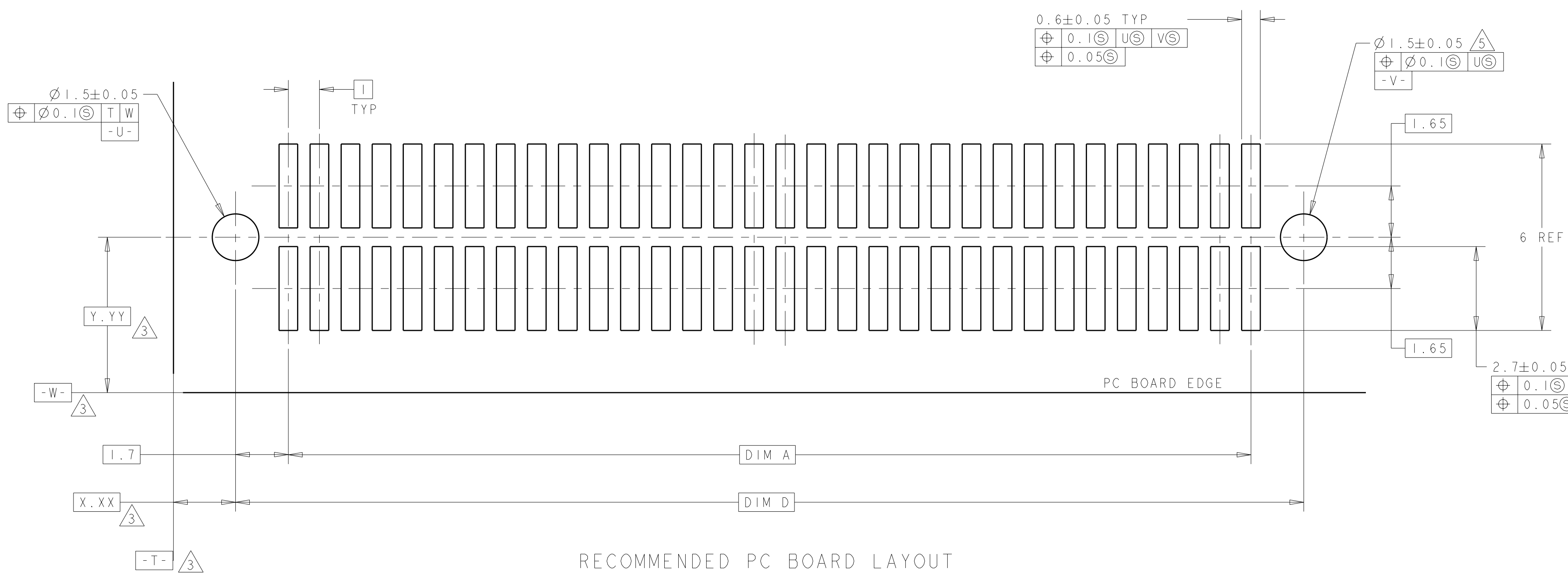
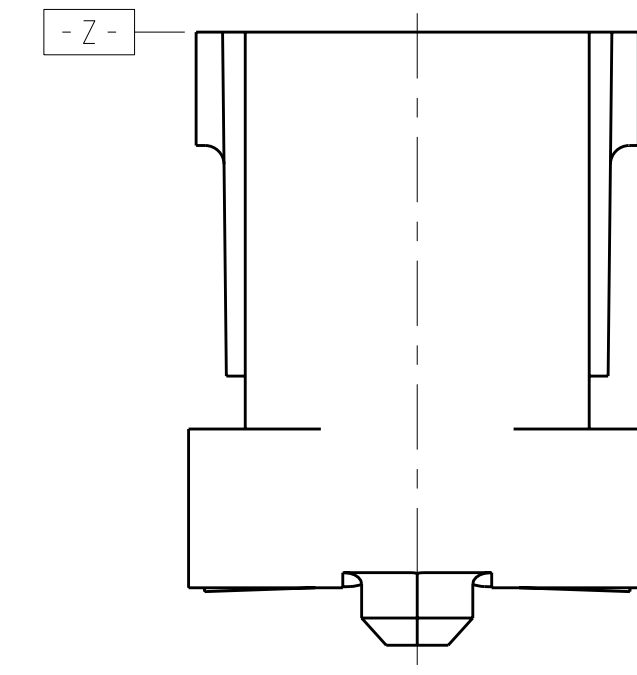
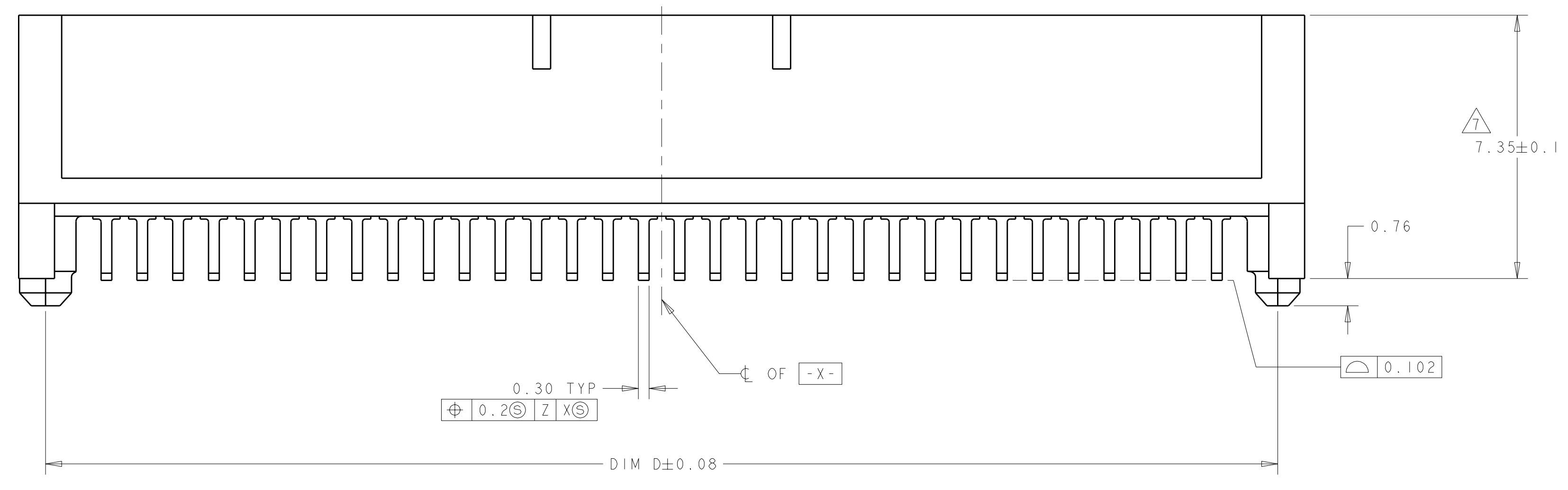


LOC	DIST	REV	DATE	BY	CHK	APPD
AD	00	0	30SEP2004	BC	RW	
		A	16SEP2005	BC	RW	
		B	10JUL2008	DH	DB	



- 1 HOUSING MATERIAL: LIQUID CRYSTAL POLYMER. COLOR; BLACK. CONTACT MATERIAL: PHOSPHOR BRONZE.
- 2 CONTACT FINISH: NICKEL UNDERPLATE ALL OVER, MATING SURFACES PLATED TO MEET PLI PERFORMANCE REQUIREMENTS OF INDUSTRY SPECIFICATION EIA-700AAAB, SOLDER TAILS PLATED TIN.
- 3 DATUM LOCATIONS AND BASIC DIMENSIONS TO BE ESTABLISHED BY THE CUSTOMER. CONSULT AMP ENGINEERING WHEN PLACING MULTIPLE CONNECTORS ON A PC BOARD.
- 4 PACKAGED IN TAPE ON REEL PER EIA-481.
- 5 1.5±0.05 DIAMETER HOLE SHOULD BE USED IF PLACED ON PCB WITH VACUUM PLACEMENT EQUIPMENT.
- 6 SHORTER SOLDER LANDS MAY BE USED PER EIA 700AAAB, HOWEVER 2.7 LENGTH ASSURES OPTIMUM SOLDER FILLET REGARDLESS OF MANUFACTURER OF CONNECTOR.
- 7 REFERRED TO AS DIM N IN EIA 700AAAB SPECIFICATION.
- 8 CONTACT FINISH: 0.00381 MINIMUM MATTE TIN PER ASTM B 545 ON SOLDER AREA, 0.00127 MINIMUM NICKEL PER ASTM B 488 ON MATING AREA, BOTH OVER 0.00127 MINIMUM NICKEL PER SAE-AMS-QQ-N-290 ON ENTIRE CONTACT.



FINISH	DIM D	DIM C	DIM B	DIM A	MATING CONNECTOR	STACK HGTS	POS	PART NO
8	44.4	45.9	44.58	41	5120524-2	14	84	1-5120526-2
8	44.4	45.9	44.58	41	5120603-2	11	84	1-5120526-2
8	44.4	45.9	44.58	41	5120521-2	9	84	1-5120526-2
8	34.4	35.9	34.58	31	5120524-1	14	64	1-5120526-1
8	34.4	35.9	34.58	31	5120603-1	11	64	1-5120526-1
8	34.4	35.9	34.58	31	5120521-1	9	64	1-5120526-1
OBSOLETE	44.4	45.9	44.58	41	5120524-2	14	84	5120526-2
OBSOLETE	44.4	45.9	44.58	41	5120603-2	11	84	5120526-2
OBSOLETE	44.4	45.9	44.58	41	5120521-2	9	84	5120526-2
2	34.4	35.9	34.58	31	5120524-1	14	64	5120526-1
2	34.4	35.9	34.58	31	5120603-1	11	64	5120526-1
2	34.4	35.9	34.58	31	5120521-1	9	64	5120526-1

THIS DRAWING IS UNPUBLISHED. RELEASED FOR PUBLICATION 20 BY TYCO ELECTRONICS CORPORATION, ALL RIGHTS RESERVED.

DIMENSIONS: mm

TOLERANCES UNLESS OTHERWISE SPECIFIED:

9 PLC	±
5 PLC	±0.03
4 PLC	±0.003
ANGLES	±0°30'

MATERIAL: SEE TABLE

FINISH: SEE TABLE

DATE: 30SEP04

CHK: R. WERTZ

APPD: R. WERTZ

PRODUCT SPEC: 502-1079

APPLICATION SPEC: 114-25045

WEIGHT: -

CUSTOMER DRAWING

SCALE: 10:1

SHEET 1 OF 1

REV B

TYCO Electronics Tyco Electronics Harrisburg, PA 17105-3608

PLUG ASSY, 1.0mm FH(IEEE1386) CONNECTOR

SIZE: 00779 C=5120526